

ARCHITECTURE IN FOCUS AGED CARE 13

SEABRAE MANOR
REDCLIFFE, QUEENSLAND

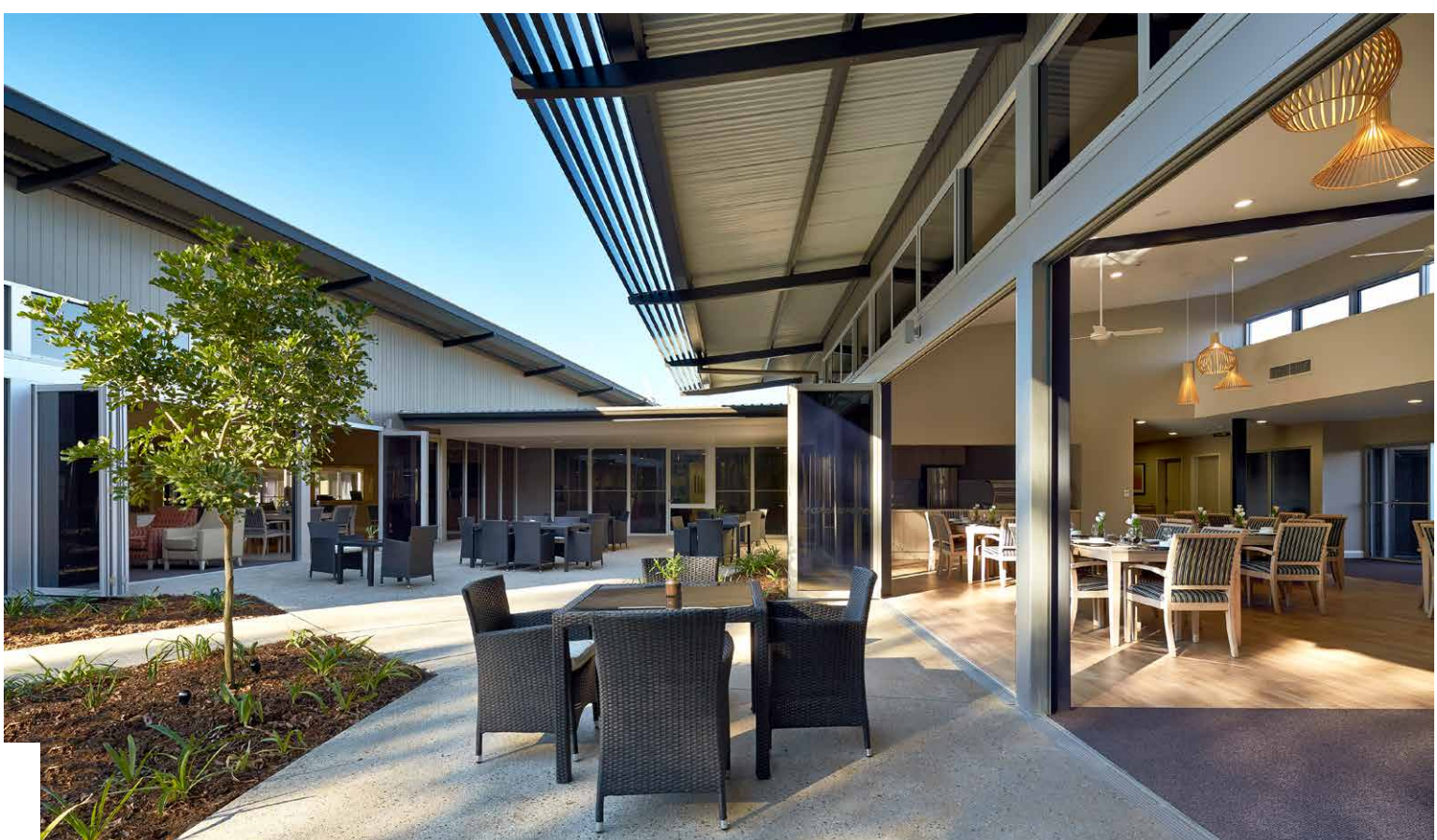
smith+tracey architects

+



Seabrae Manor is a 94 bed residence aligned to the client's vision and values. The aspiration for this new facility is to enable the ongoing improvement of care; create a resident lifestyle for the ageing population of Redcliffe; and advance operational effectiveness and employee productivity.

The home is efficiently designed to create an integrated community that enables social interaction and celebrates life, whilst still allowing for independence, privacy and dignity for each resident. Three separate houses merge through communal activity spaces to provide a community heart interconnected by accessible courtyards creating a sense of energy. Importantly the open feel of the facility layout enables residents to interact with each other, and provides staff with good visual contact and engagement with residents as required. Supporting this, wireless technology enables a tablet based care system, and communication software packages allow residents to stay in contact with their families.



The project was delivered through a unique holistic process that established an integrated team from feasibility to operational implementation, including ongoing repairs and maintenance. The collective thinking and knowledge shared through this collaborative partnership approach with key stakeholders, consultants and the builder has produced a highly sought after facility, with early resident occupation and bond return far exceeding expectations.



Melbourne
1 Yarra Street
Hawthorn
VIC 3122
t. 03 8808 6444
f. 03 9818 3977

Sydney
Level 6/69
Reservoir Street
Surry Hills NSW 2010
t. 02 8218 2113
m. 0412 152 448

Brisbane
Unit 4/5
Navigator Place
Hendra QLD 4011
t. 07 3632 2550
f. 07 3632 2599

www.smithtracey.com.au

smith+tracey architects

+

MASTER PLANNERS | ARCHITECTS | INTERIOR DESIGNERS

Copyright © 2015 smith+tracey architects, All rights reserved.